



photo **PRINT6** 

MORE THAN JUST A RIP



## MORE THAN JUST A RIP

As technology moves forward, SA International brings you a new era in color management. Progressing along with the large format industry, PhotoPRINT™ 6 is designed to help your productivity ascend to new heights—while maintaining SAI's signature ease-of-use interface.

- **PRINT WIZARD**

The new Print Wizard adds a simple question and answer approach to your workflow. It guides a user from adding a job, choosing a printer, setting basic job parameters and finally to print. Even color correction has been made simple by linking to our new Variations feature included in the Print Wizard.



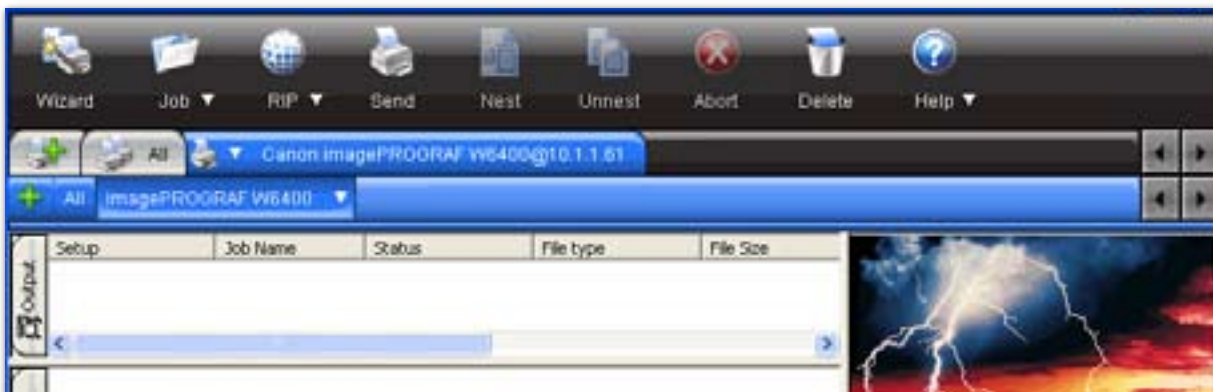
Print Wizard



Variations

- **VISTA SUPPORT**

Staying up to date with leading technology, PhotoPRINT 6 is fully compatible with Windows Vista. The user interface has been redesigned following Microsoft's guidelines for Vista applications.





## • N-COLOR SUPPORT

PhotoPRINT 6 begins a new era in color management by supporting up to 16 true color channels\*. ICC profiles can now be created for RGB or OG printers with the new, simplified, user-friendly Color Profiler which supports the new version 4 profiles.

(\*Driver must also support n-color)

|  |         |      |
|--|---------|------|
|  | Cyan    | 100% |
|  | Magenta | 100% |
|  | Yellow  | 100% |
|  | Black   | 100% |
|  | Red     | 100% |
|  | Green   | 100% |
|  | Blue    | 100% |

## • DUAL ROLL SUPPORT

The new dual roll option allows you to define two media sizes to be used simultaneously even on printers that technically don't support two rolls. If jobs are nested, the WYSIWYG layout control allows you to easily define ICC Profiles, among other things, for individual jobs per roll.



Dual Roll

## • READY TO PRINT FROM CREATIVE APPLICATION



With our new dynamic PPDs, you are able to print from any application using PhotoPRINT 6 presets or ICC profiles. After you create new presets or ICC profiles, these can be easily added to the desktop printer settings with a single click in your Setup Properties.

## PHOTOPRINT 6 PRODUCTS :

### PhotoPRINT SERVER-PRO

The complete client-server RIP solution package includes extended capabilities and cost-saving features. Additional features include an EDITOR station for layout and design and Color Profiler for output profile creation and editing.

### PhotoPRINT SERVER

The client-server RIP solution for networks and large production environments, featuring productivity tools such as Job Priority, Page Nesting and Job Nesting. These tools will make workflow to multiple printers generate accurate and consistent results in any volume.

### PhotoPRINT DX

An unparalleled layout package with design capabilities for text, shapes and effects, combined with the versatility to RIP and print to two devices simultaneously. The design and output of Print & Cut decals is straightforward and accurate with this integrated solution.

### PhotoPRINT SE

A RIP solution with the fundamentals for the single-workstation environment. Send jobs to RIP and print directly from popular design applications such as Adobe Photoshop® and Illustrator®, QuarkXPress®, CorelDRAW®, and CAD/AEC/GIS engineering solutions.





MORE THAN JUST A RIP

| TOP 30 FEATURES                              | PhotoPRINT SERVER-PRO | PhotoPRINT SERVER | PhotoPRINT DX | PhotoPRINT SE |
|--|-----------------------|-------------------|---------------|---------------|
| <b>CLIENT</b>                                |                       |                   |               |               |
| Print Jobs from any Application              | Improved              | Improved          |               | Improved      |
| Receive Jobs from a Network Environment      | ✓                     | ✓                 |               |               |
| <b>JOB CONTROL</b>                           |                       |                   |               |               |
| Dual Roll Printing                           | New                   | New               |               |               |
| Job Filtering                                | New                   | New               | New           |               |
| Job Estimation                               | New                   | New               |               |               |
| TWAIN (scan directly to queue)               | New                   | New               | New           |               |
| Repeat Job                                   | New                   | New               | New           | Optional      |
| Print Wizard                                 | New                   | New               | New           | New           |
| Job Nesting: Manual & Automatic              | Improved              | Improved          |               |               |
| Manual Editing of Nested Jobs                | Improved              | Improved          |               |               |
| Presets: Import, Save, Apply & Export        | Improved              | Improved          | Improved      | Improved      |
| <b>RIP</b>                                   |                       |                   |               |               |
| Adobe® PostScript® 3                         | ✓                     | ✓                 | ✓             | ✓             |
| Contour Cut to Hybrid Printer/Cutter         | ✓                     | ✓                 | ✓             | ✓             |
| Contour Cut to Virtual Hybrid Printer/Cutter | ✓                     | ✓                 | ✓             |               |
| Simultaneous Output Threads                  | 3                     | 3                 | 2             | 1             |
| CMYK & Spot Color Separations                | ✓                     | ✓                 | ✓             |               |
| <b>COLOR MANAGEMENT</b>                      |                       |                   |               |               |
| CMYK +(RGB, RB, OG)                          | Improved              | Improved          | Improved      | Improved      |
| ICC Profile Editing                          | Improved              | Improved          | Improved      | Improved      |
| ICC Profile Creation                         | ✓                     |                   |               |               |
| Utilize 3rd Party ICC Output Profiles        | ✓                     | ✓                 | ✓             | ✓             |
| Object Color Control                         | Improved              | Improved          |               |               |
| Global Color Mapping with Pantone® Library   | ✓                     | ✓                 | ✓             | ✓             |
| Custom Color Mapping                         | Improved              | Improved          |               |               |
| Printer Simulation                           | ✓                     | ✓                 |               |               |
| <b>DESIGN</b>                                |                       |                   |               |               |
| Text Creation & Editing                      | ✓                     |                   | ✓             |               |
| Make Transparent Bitmap                      | New                   |                   | New           |               |
| Contour Cut Creation & Editing               | ✓                     |                   | ✓             |               |
| Auto Serialization (Variable Data)           | ✓                     |                   | Optional      |               |
| Templates: Apply, Create, & Edit             | ✓                     |                   | Optional      |               |

**For more information and to request a Demonstration, please contact:**



Powered by



PhotoPRINT is a registered trademark of SAI; Adobe and PostScript are registered trademarks of Adobe Systems, Inc.; Pantone and other Pantone, Inc. trademarks are the property of Pantone, Inc.; ColorLogic is a registered trademark of ColorLogic GmbH. All other trademarks are the property of their respective owners.  
©2007 SAI. All Rights Reserved.  
Specifications subject to change without notice.



**SA International** International Plaza Two, Suite 625 Philadelphia, PA 19113-1518 USA  
Toll Free: 800-229-9068 Tel: 610-521-6300 Fax: 610-521-0111  
Email: info@SAintl.biz Website: www.SAintl.biz

**SAI Europe** Minervastraat 14 bis B-1930 Zaventem, Belgium Tel: +32-2-725-5295 Fax: +32-2-725-2809  
Email: info@SAintl.biz